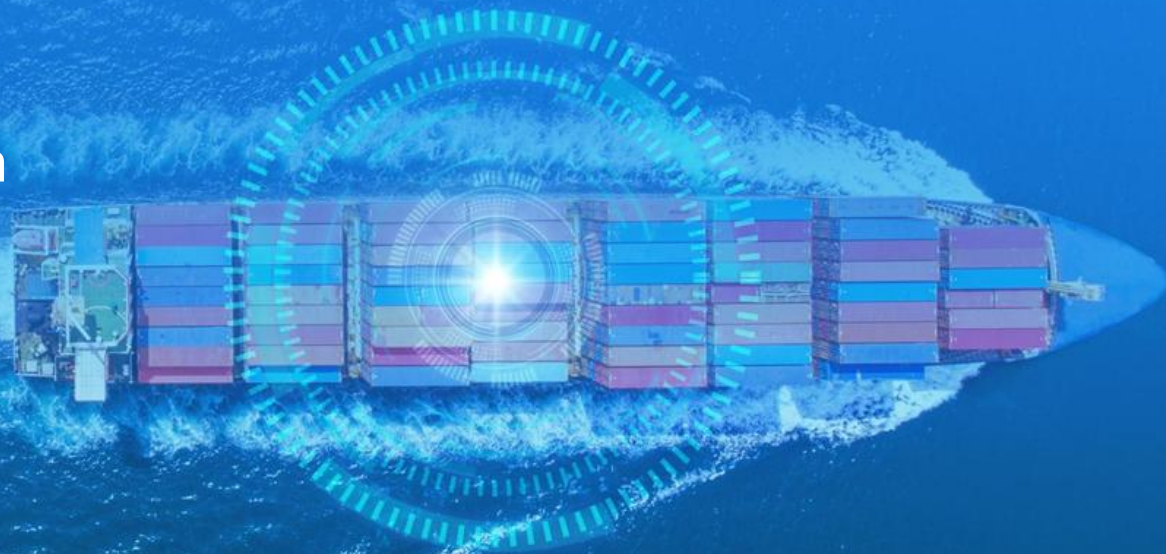




ACS and its activities, remote inspection techniques and new regulations.

Captain M.Prathaban
ACS TMG Chair

12 November 2025





CONTENTS

PART I Introduction to ACS

PART II Remote Inspection Techniques (RIT)

PART III New Regulations

PART IV Conclusion

PART

I

Introduction to ACS

- 1 Establishment of ACS
- 2 ACS's Objectives and Activities
- 3 ACS Organization
- 4 ACS's Guidelines
- 5 ACS Seminar 2025



ACS
ASSOCIATION OF ASIAN CLASSIFICATION SOCIETIES

1. Establishment of ACS









- **1993~: Asian Classification Societies**

Annual executive meetings among CCS, IRS, KR, and NK
 (2002~ BKI and VR joined as observers)

- **2010: Association of Asian Classification Societies**

Formalized by adopting a Charter with CCS, IRS, KR, NK, BKI, and VR.

SCM (from 2018), and TASNEEF (from 2022) become the 7th and 8th ACS Member respectively

Members since 1993			
	CCS (China Classification Society)		KR (Korean Register)
	IRS (Indian Register of Shipping)		NK (Nippon Kaiji Kyokai)
Formally joined since 2010			
	BKI (Biro Klassifikasi Indonesia) from 2010		VR (Vietnam Register) from 2010
	SCM (Ships Classification Malaysia) from 2018		TASNEEF (Emirates Classification Society) from 2022

ACS Activities

1

The monitoring of IMO meetings. The outcome is closely monitored so that members can give technical support to the various Administrations that they represent

2

Engagement with other organisations. ACS has a longstanding relationship with ASA and ASEF, ACS attends the annual forums held by ASA and ASEF where presentation papers are made on selected topics.

3

Monitoring local legislation. One of the permanent agenda in the TMG meetings is the sharing of local legislations, that is provided by members, so that foreign shipping entering their waters are compliant to their regulations

2. ACS's objectives and activities (cont.)

ACS Activities

4

Technical guidelines. The TMG with the support of the both the WGs have produced numerous guidelines and FAQs that are available to the public through the ACS website. See: asiancs.org

5

Monitoring PSC Performance. Annually, ACS monitors the PSC performance of its member societies. Incidentally, one of the membership criteria for ACS membership is the fair performance in the various MOUs

6

ACS also participates in the Tokyo MOU open forum and IOMOU industry forum session where ACS representatives make their technical presentation and often raise matters regarding PSC inspections and practices that require further discussion or clarification.

Introduction to ACS



5. ACS Seminar (cont.)



Petaling Jaya, 2025



Petaling Jaya, 2025



Jakarta , 2023



Da Nang, 2024

PART Remote Inspection **II** Techniques

- 1 Traditional Inspection Techniques**
- 2 Remote Inspection Techniques (RIT)**
- 3 General Requirements for RIT**

➤ Requirement for structural inspections:

1. Annual survey
2. Intermediate survey (CU)
3. Renewal survey (CU)
4. ESP Code (CU)

➤ Access provided by:

1. Scaffolding/Staging
2. Rafting
3. Cherry pickers
4. Rope access
5. Dry docking
6. Diving



CU: close up inspection: A survey where the details of structural components are within the close visual inspection range of the surveyor i.e. within reach of hand.

Remote Inspection Techniques (RIT) refer to a means of surveying any parts of a ship's structure without requiring surveyors' direct physical access of the surveyor. While RIT has been utilized for hull survey by many class societies, it had not been formally incorporated into the 2011 ESP Code until now at MSC110, in view adoption at MSC111



**Unmanned Aerial Vehicle (UAV) /
Drone**

**Remotely Operated Vehicle (ROV) /
Autonomous Underwater Vehicle (AUV)**



Magnetic Crawler Robot

Approval of firms conducting RIT

The amendment to the ESP Code has provisions for the approval of firms conducting close up inspections using RIT

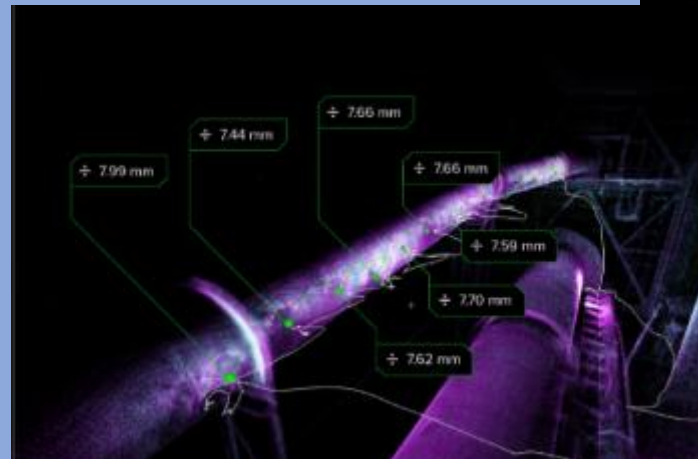
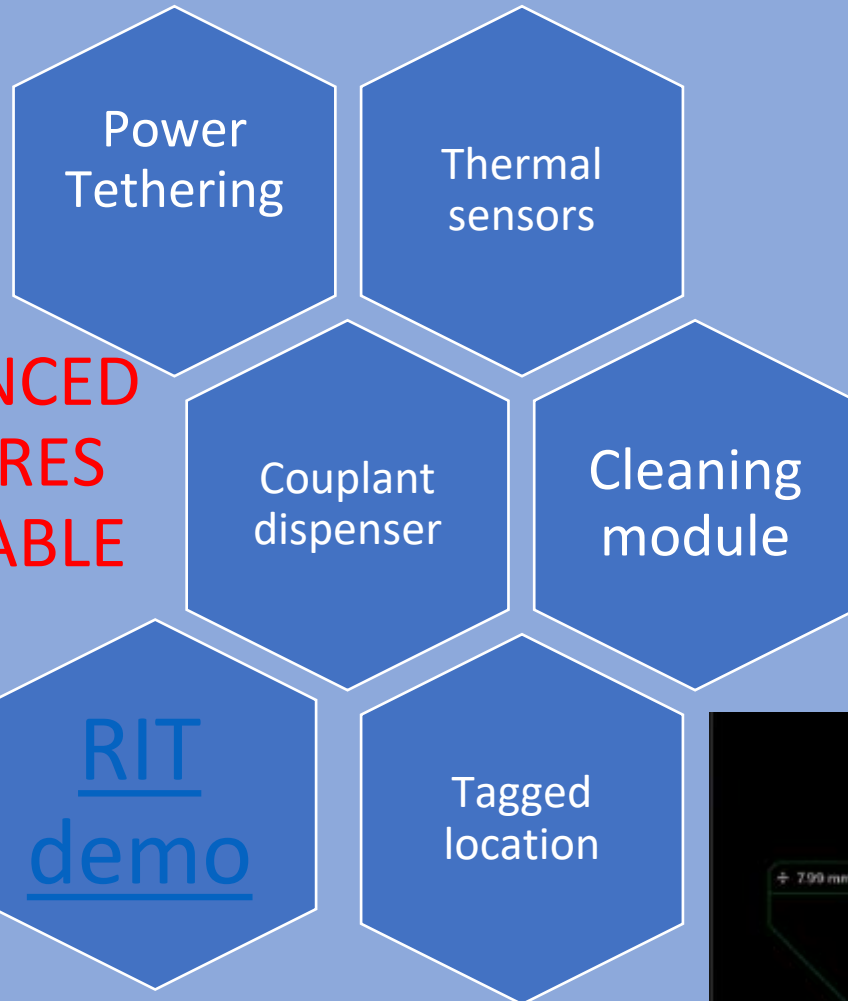
1 Supervisors and operators are to be certified according to national requirements or industrial standards.

2 Supervisors (min.2 yrs) Operators (min.1 yr) experienced in inspections of ships structures

3 Operators may require specific license from the national authority.

4 The firm shall maintain a documented training plan for the operators which include knowledge of the equipment and ships structures.

ADVANCED
FEATURES
AVAILABLE
NOW



PART

III

New Regulations



ACS

ASSOCIATION OF ASIAN CLASSIFICATION SOCIETIES

Focus on MSC110

Amendment to mandatory instruments

SOLAS

Pilot transfer arrangement: complete amendment to Ch.V/ Reg.23

1994 and 2000 HSC code: clarification on the carriage of life jackets

ChII-1 Reg 56 , 57 ships using low FP fuels further work to be carried out

IGC Code

The approval of the of amendments to the IGC Code was delayed until MSC 111 (May 2026), with a view to adoption by MSC 112 (December 2026),

LSA Code

Requirements for Lifejackets

Launching and embarkation appliances

Lifeboat Release Testing for Free-Fall Lifeboats

Ventilation Requirements for Totally Enclosed Lifeboats

Lifeboats fittings, LB release hooks

IMSBC

New schedules for cargoes under the IMSBC Code

Alignment of the segregation tables in the IMSBC Code

Amendments to, or new schedules for cargoes

Salients point of the Performance Standards for Pilot Transfer Arrangements: RESOLUTION MSC.576(110)

GENERAL requirements: **DESIGNED, INSTALLED, INSPECTED, MAINTAINED AND RIGGED** in accordance to the performance standards

Part A Design ,manufacture, construction	Part B Rigging	Part C Pilot ladder winch reels	Part D Operations, inspection , maintenance	Part E Familiarization	Part F Approval
<ul style="list-style-type: none"> • Permanent markings: name of manufacturer/ serial number/ date of manufacture/ details of approving auth. • Side ropes, double length, 24kN, 20-22 mm • All securing points, shackles, securing rope 48 kN. • Securing at intermediate lengths • Side door openings clearance H 2.2m W 0.915m • Rubbing band/ fenders, 6 m gap, may be reduced for specialized ships. • Gateway in the rails or bulwarks 	<ul style="list-style-type: none"> • Clear from ships discharge • Within the parallel body • Retrieval line at the lowest spreader , leading forward • Manropes • Life buoy c/w light • Heaving line 	<ul style="list-style-type: none"> • If a pilot ladder is to be stowed on a winch drum, the drum diameter shall be not less than 0.16 m and the drum shall be provided with sunken securing points. • Physical positioning • Unobstructed passage for the pilot 	<ul style="list-style-type: none"> • Periodical maintenance and inspections • Stowed to prevent degradation. • Instructions for care and maintenance • Detailed inspections every 3 months. • Maintenance plan implemented and available for inspection. • Repair or replacement of steps or spreaders prohibited. • 1 set spare pilot ladder and man ropes to be provided. • Pilot ladders, manropes inc. their spares are to be removed from service : when not compliant, or 36 months after manufacture date or 30 months after date of entering service 	<ul style="list-style-type: none"> • Personnel involved to receive familiarization to assigned duties. • On ships compliant to S/ Ch. IX, personnel will receive their familiarization in accordance to the ships SMS 	<ul style="list-style-type: none"> • Pilot transfer arrangement shall be approved by the Administration before entering service, after repair or modification. • Manufacturers quality control required , and shall be audit by a competent authority.

RESOLUTION MSC.572(110) Chapter V/ Reg.23

Pilot transfer arrangements

RESOLUTION MSC.576(110) Performance Standards for Pilot Transfer Arrangements

Application: pilot transfer arrangements installed after **01 Jan 2028**

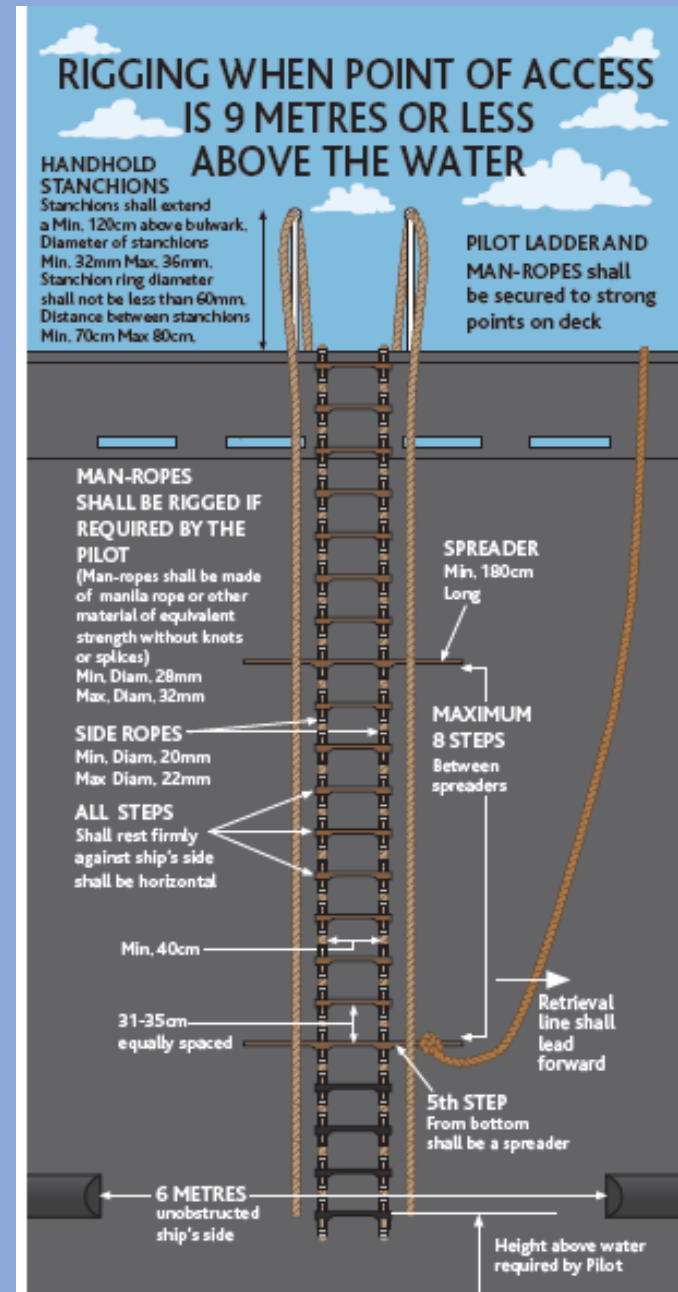
To comply with all **parts A-F**

All Companies shall have an approved **safety management system** which includes ship-specific procedures for the safe conduct of pilot transfers. The ISM Code requires that these procedures comply with SOLAS Chapter V regulation 23 and conform to IMO recommendations, international standards and guidance from marine industry organizations.

Application: existing pilot transfer arrangements installed before **01 Jan 2028**

comply with **parts D-E** after **01 Jan 2028**

comply with **Part A-C and F** after the **1st survey** after **01 Jan 2029**



PART
IV Conclusion

Association of Asian Classification Societies (ACS)

- Provides **technical support** to the Asian maritime industry and governments
 - Develops **ACS Technical Guidelines** through R&D and monitoring of regulatory changes and highlights industry concerns
 - Holds an annual **ACS Seminar** to share knowledge
 - **Works with ASA and ASEF** on joint projects
- ❖ **ACS strives to strengthen its cooperation and collaboration with industry organizations, particularly ASA and ASEF.**



Thank you

Captain M.Prathaban

ACS TMG Chair

E-mail: acs@myscm.com.my

